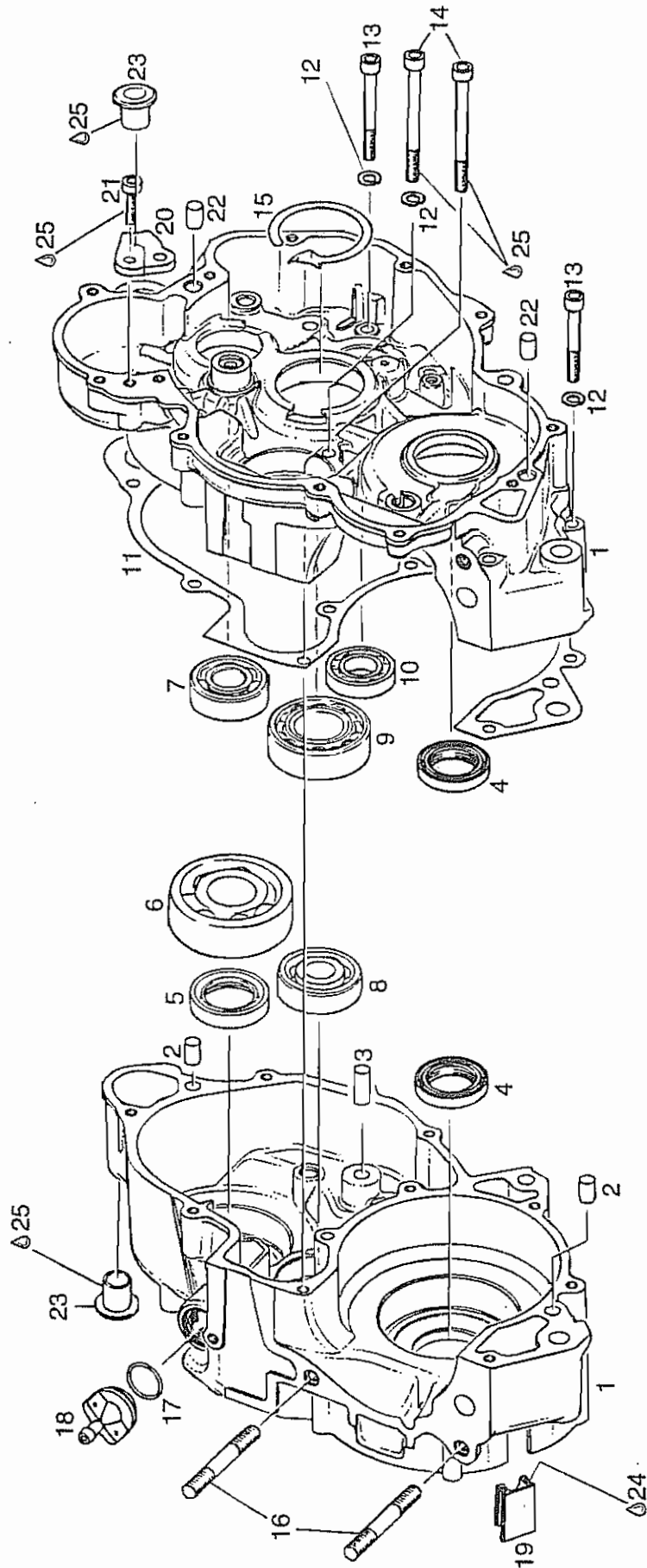


INHALTSVERZEICHNIS
TABLE OF CONTENTS
TABLE DES MATIERES

SEITE / PAGE

KURBELGEHAEUSE, GETRIEBELAGER CRANKCASE, GEAR BEARINGS CARTER MOTEUR, ROULEMENTS DE TRANSMISSION	5
KURBELWELLE, KOLBEN CRANKSHAFT, PISTON VILEBREQUIN, PISTON	9
ZYLINDER, ZYLINDERKOPF, ANSAUGSTUTZEN CYLINDER, CYLINDER HEAD, INTAKE SOCKET CYLINDRE, CULASSE, PIPE D'ADMISSION	13
6-GANG GETRIEBE 6-SPEED TRANSMISSION BOITE A 6 VITESSES	17
KUPPLUNG, KICKSTARTER CLUTCH, KICK START EMBRAYAGE, KICKSTARTER	23
KUPPLUNGSDECKEL, WASSERPUMPE CLUTCH COVER, WATER PUMP CARTER D'EMBRAYAGE, POMPE A EAU	27
MAGNETZUENDER-GENERATOR 12V 60/40/20W, ZUENDERDECKEL MAGNETO GENERATOR 12V 60/40/20W, IGNITION COVER ALLUMAGE 12V 60/40/20W, COUVERCLE D'ALLUMAGE TYPE 237 TL. BIS MOTOR NR. / UP TO ENGINE NO./ A PARTIR DU NO. MOTEUR 425442 TYPE 267 TL: BIS MOTOR NR. / UP TO ENGINE NO./ A PARTIR DU NO. MOTEUR 376470	31
MAGNETZUENDER-GENERATOR 12V 60/40/20W, ZUENDERDECKEL MAGNETO GENERATOR 12V 60/40/20W, IGNITION COVER ALLUMAGE 12V 60/40/20W, COUVERCLE D'ALLUMAGE TYPE 237 TL:AB MOTOR NR. / FROM ENGINE NO./ JUSQU'AU NO. MOTEUR 425443 TYPE 267 TL:AB MOTOR NR. / FROM ENGINE NO./ JUSQU'AU NO. MOTEUR 376471	35
REPARATURWERKZEUGE, DICHTUNGSSATZ REPAIR TOOLS, GASKET SET OUTILS POUR REPARATION, POCHETTE DE JOINT	39

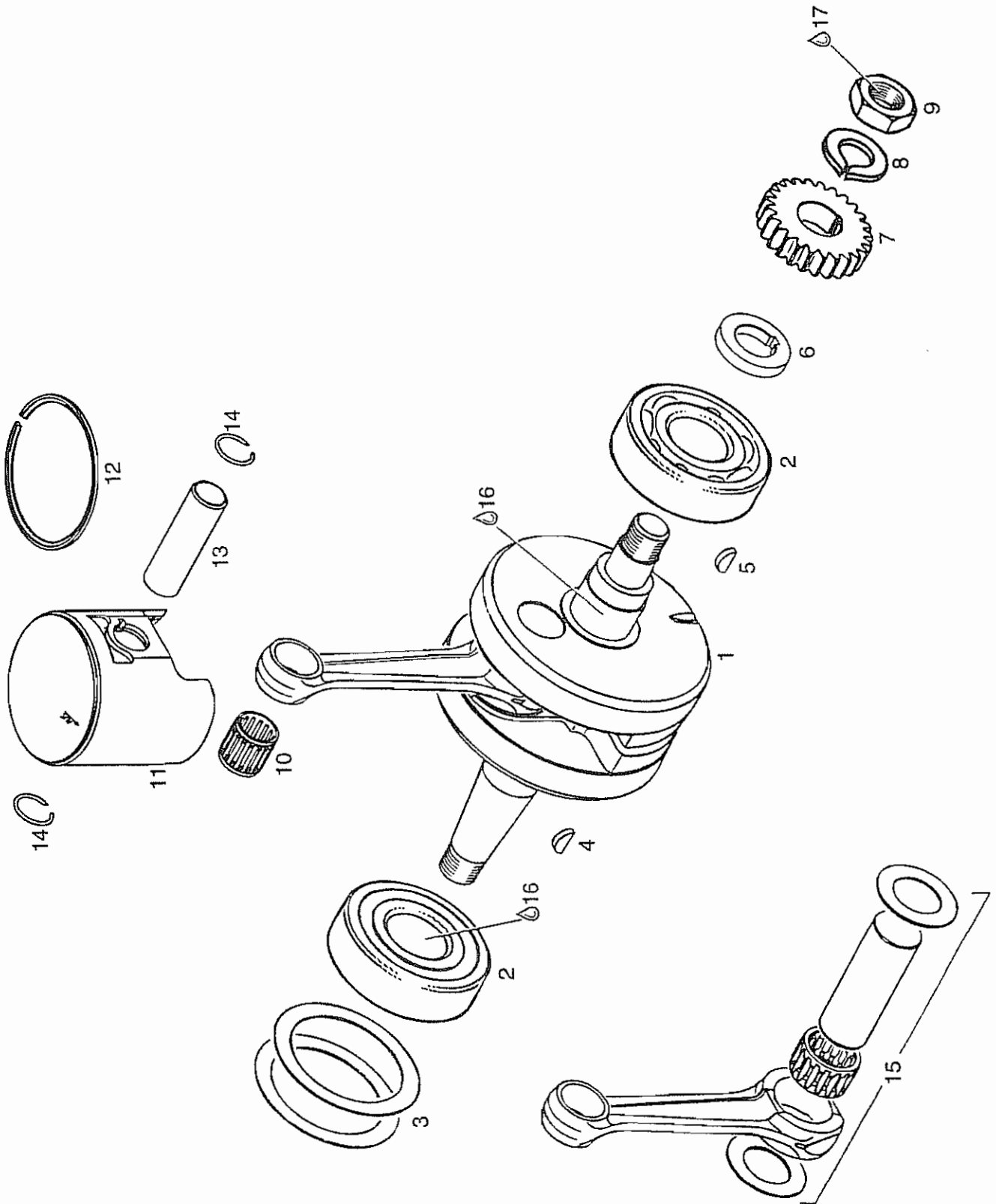


KURBELGEHAEUSE, GETRIEBELAGER
CRANKCASE, GEAR BEARINGS
CARTER MOTEUR, ROULEMENTS DE TRANSMISSION

BILD-NR.	TEILE-NR.	B E Z E I C H N U N G	STUECK
ILL. NO.	PART NO.	D E S C R I P T I O N	QTY.
ILL. NO.	REFERENCE	D E S C R I P T I O N	QTE.
1 - 3	N 294 846	GEHAEUSE KPL. / CRANKCASE ASSY. CARTER MOTEUR CPL..... HELLGRAU LIGHT-GRAY GRIS CLAIR	1
2	632 010	ZYLINDERROLLE 8X12 DIN 5402 / PIN 8X12 CHEVILLE 8X12.....	2
3	929 940	ZYLINDERSTIFT 8 KLEIN M6X20 / PIN 8X20 CHEVILLE 8X20.....	1
4	230 425	WD-RING AS 28X38X7 NBR / OIL SEAL 28X38X7 JOINT SPI 28X38X7..... FUER KURBELWELLE, KUPPLUNGS- UND MAGNETSEITIG FOR CRANKSHAFT, CLUTCH SIDE AND MAGNETO SIDE POUR VILEBREQUIN, COTE EMBRAYAGE ET ALLUMAGE	2
5	830 602	WD-RING AS 25X35X7 NBR / OIL SEAL 25X35X7 JOINT SPI 25X35X7..... FUER HAUPTWELLE FOR MAIN SHAFT POUR ARBRE SECONDAIRE	1
6	932 825	RK-LAGER 6305 TNH C3 BALL BEARING 6305 C3, 25-62-17 ROULEMENT A BILLES 6305,25-62-17..... FUER HAUPTWELLE, MAGNETSEITIG FOR MAIN SHAFT, MAGNETO SIDE POUR ARBRE PRINCIPAL, COTE ALLUMAGE	1
7	932 032	RK-LAGER 6203 TVH C3 BALL BEAR. 6203 TVH C3,17-40-12 ROULEMENT 6203 TVH C3, 17-40-12..... FUER HAUPTWELLE, KUPPLUNGSSEITIG FOR MAIN SHAFT, CLUTCH SIDE POUR ARBRE PRINCIPAL, COTE EMBRAYAGE	1
8	232 291	RK-LAGER 6302 TN9/C3 BALL BEARING 6302 TN9C3/15-42-13 ROULEMENT TN9 C3/15-42-13..... FUER VORGELEGEWELLE, MAGNETSEITIG FOR CLUTCH SHAFT, MAGNETO SIDE POUR ARBRE PRIMAIRE, COTE ALLUMAGE	1

BILD-NR. ILL. NO. ILL. NO.	TEILE-NR. PART NO. REFERENCE	B E Z E I C H N U N G D E S C R I P T I O N D E S C R I P T I O N	STUECK QTY. QTE.
9	N 232 765	RK-LAGER 6205 TVH BALL BEARING 6205 TVH / 25-52-15 ROULEMENT 6205 TVH / 25-52-15.....	1
		FUER VORGELEGEWELLE, KUPPLUNGSSEITIG FOR CLUTCH SHAFT, CLUTCH SIDE POUR ARBRE PRIMAIRE, COTE EMBRAYAGE	
10	232 590	RK-LAGER 16003 / BALL BEARING 16003 ROULEMENT.....	1
		FUER SCHALTWALZE 17-35-8 FOR GEAR SHIFT DRUM 17-35-8 POUR BARRILLET 17-35-8	
11	250 820	DICHTUNG / GASKET / JOINT.....	1
12	945 751	FEDERRING DIN 128-A6-FST / LOCK WASHER A6 RONDELLE FREIN A6.....	10
13	241 821	ZYL.SCHRAUBE M6X45 DIN 912 ALLEN SCREW M6X45 / VIS BTR M6X45.....	7
		ANZUGSDREHMOMENT 10 NM TIGHTENING TORQUE 10 NM (88 IN.LB.) COUPLE DE SERRAGE 10 NM	
14	241 871	ZYL.SCHRAUBE M6X70 DIN 912 ALLEN SCREW M6X70 / VIS BTR M6X70.....	4
		ANZUGSDREHMOMENT 10 NM TIGHTENING TORQUE 10 NM (88 IN.LB.) COUPLE DE SERRAGE 10 NM	
15	627 010	AUSGLEICHSCHIEBE SHIM CALE.....	N BED AS REQ A DEM.
		FUER VORGELEGEWELLE FOR CLUTCH SHAFT POUR ARBRE PRIMAIRE	
16	840 536	STIFTSCHRAUBE M8X44/20 / STUD M8X44/20 GOUJON M8X44/20.....	4
		ANZUGSDREHMOMENT 10 NM TIGHTENING TORQUE 10 NM (88 IN.LB.) COUPLE DE SERRAGE 10 NM	
17	250 890	O-RING DIN 3771-17X1,5-N O-RING DIN 3771-17X1,5-N JOINT TORIQUE 3771-17X1,5-N.....	1
18	241 925	ENTLUEFTUNGSSCHRAUBE M18X1,5 AIR VENT SCREW M18X1,5 BOUCHON DE RENIFLARD M18X1,5.....	1

BILD-NR. ILL. NO. ILL. NO.	TEILE-NR. PART NO. REFERENCE	B E Z E I C H N U N G D E S C R I P T I O N D E S C R I P T I O N	STUECK QTY. QTE.
19	260 840	LEITUNGSTUELLE / GROMMET / PASSE-FIL..... AN VORGESCHNITTENER STELLE ABTRENNEN CUT ON POSITION PRE-CUT COUPER A LA POSITION PRE-COUPÉE	1
20	228 230	SPERRADANSCHLAG / RATCHET GEAR STOP BUTEE DE PIGNON A ROCHET.....	1
21	240 401	ZYL.SCHRAUBE M6X20 DIN 6912 ALLEN SCREW M6X20 / VIS BTR., M6X20..... ANZUGSDREHMOMENT 10 NM TIGHTENING TORQUE 10 NM (85 IN.LB.) COUPLE DE SERRAGE 10 NM	2
22	632 010	ZYLINDERROLLE 8X12 DIN 5402 / PIN 8X12 CHEVILLE 8X12.....	2
23	247 320	BUNDBUECHSE / SLEEVE / DOUILLE.....	2
24	297 386	SILASTIC 732 RTV SILASTIC 732 RTV, 100 GR., SILASTIC 732 RTV, 100 GR.,..... TRANSPARENT, 100 GR. TRANSPARENT TRANSPARENT	N BED AS REQ A DEM.
25	899 785	LOCTITE 221 VIOLETT LOCTITE 221 VIOLET, 10 CC., LOCTITE 221 VIOLET 10 C.C.,..... LOCTITE 221 VIOLETT, 10 CCM., LOW STRENGTH BOND PATE FREIN FILET, FAIBLE	N BED AS REQ A DEM.

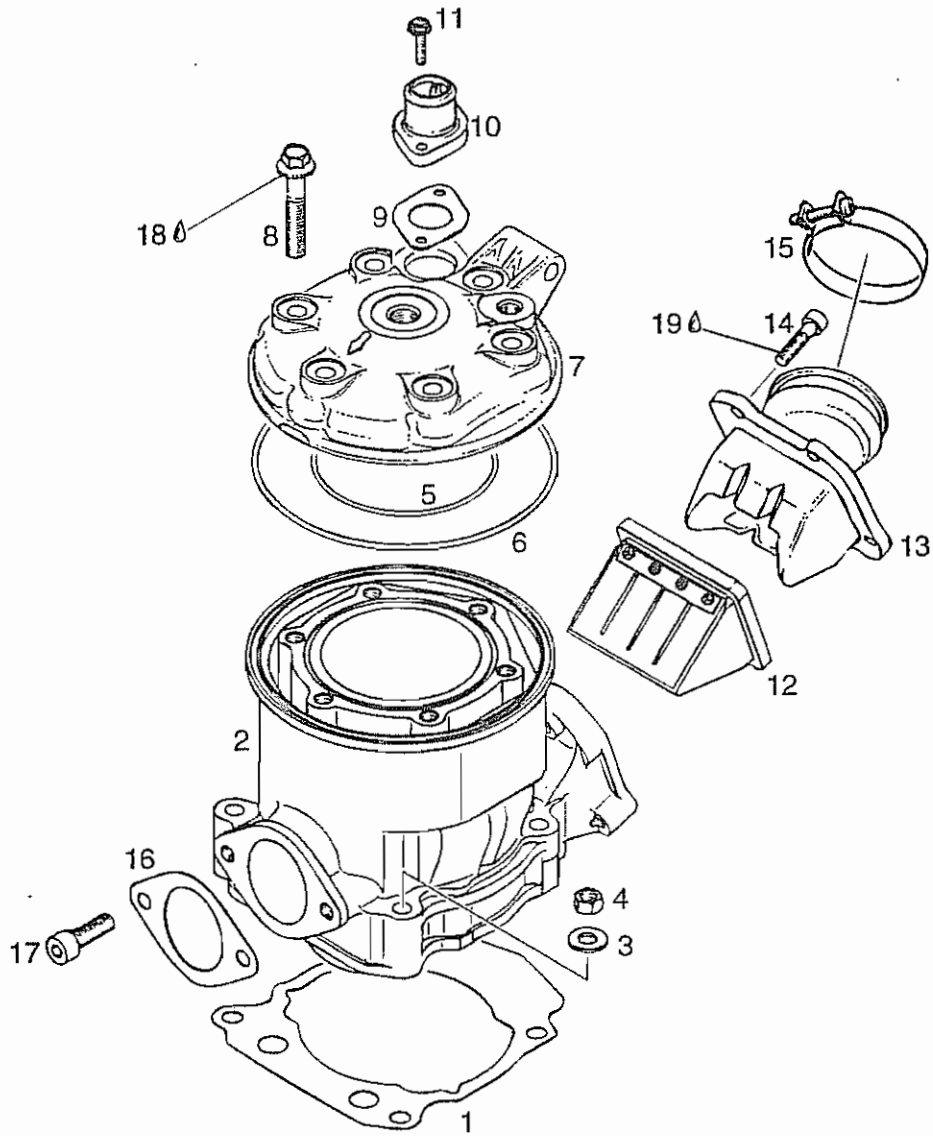


**KURBELWELLE, KOLBEN
CRANKSHAFT, PISTON
VILEBREQUIN, PISTON**

BILD-NR. ILL. NO. ILL. NO.	TEILE-NR. PART NO. REFERENCE	B E Z E I C H N U N G D E S C R I P T I O N D E S C R I P T I O N	STUECK QTY. QTE.
1	294 865	KURBELWELLE KPL. / CRANKSHAFT ASSY. VILEBREQUIN CPL.,..... HUB 67 MM / STROKE 67 MM / COURSE 67 MM	1
2	932 571	RK-LAGER 6306 TNH C3 BALL BEARING 6306TNH C3 32-72-19 ROULEMENT 6303 TNH C3 32-72-19.....	2
3	427 660	PASSSCHEIBE 56X72X0,3 DIN 988 SHIM 56X72X0,3 CALE 56X72X0,3.....	N BED AS REQ A DEM.
3	427 661	PASSSCHEIBE 56X72X0,5 DIN 988 SHIM 56X72X0,5 CALE 56X72X0,5.....	N BED AS REQ A DEM.
3	427 662	PASSSCHEIBE 56X72X0,1 DIN 988 SHIM 56X72X0,1 CALE 56X72X0,1.....	N BED AS REQ A DEM.
3	427 663	PASSSCHEIBE 56X72X0,2 DIN 988 SHIM 56X72X0,2 CALE 56X72X0,2.....	N BED AS REQ A DEM.
4	246 015	SCHEIBENFEDER 3X5 DIN 6888 WOODRUFF KEY 3X5 / CLAVETTE DEMI-LUNE 3X5	1
5	946 005	SCHEIBENFEDER 5X6,5 DIN 6888 WOODRUFF KEY 5X6,5 CLAVETTE DEMI-LUNE 5X6,5.....	1
6	N 247 920	DISTANZSCHEIBE / SHIM / RONDELLE DISTANCE	1
7	294 831	PRIMAERTRIEB KPL. / PRIMARY DRIVE ASSY. TRANSMISSION PRIMAIRE CPL.,..... NUR ANTRIEBSRAD MIT KUPPLUNGSKORB KPL. GEMEINSAM AUSTAUSCHEN REPLACE ONLY DRIVE GEAR WITH CLUTCH DRUM ASSY. REPLACER IMPERATIVEMENT LA TRANSMISSION PRIMAIRE COMPLETE	1
8	945 757	SPERRKANTRING 18 DIN 128 A LOCK WASHER 18 / RONDELLE FREIN 18.....	1

BILD-NR. ILL. NO. ILL. NO.	TEILE-NR. PART NO. REFERENCE	B E Z E I C H N U N G D E S C R I P T I O N D E S C R I P T I O N	STUECK QTY. QTE.
9	942 220	SK-MUTTER M18X1,5 / HEX. NUT M18X1,5 ECROU HEX. M18X1,5..... ANZUGSDREHMOMENT 120 NM TIGHTENING TORQUE 120 NM (1060 IN.LB.) COUPLE DE SERRAGE 120 NM	1
10	932 904	KOLBENBOLZENKAEFIG K 18X22X22 NEEDLE CAGE 18X22X22 CAGE A AIGUILLES 18X22X22.....	1
11 - 12 N	295 640	KOLBEN KPL. 68,88/68,89 MM PISTON ASSY. 68,88/68,89 MM PISTON CPL. 68,88/68,89 MM..... FUER 237 TL FOR 237 TL POUR 237 TL	1
11 - 12 N	295 255	KOLBEN KPL. 71,98/71,99 MM PISTON ASSY. 71,93/71,94 MM PISTON CPL. 71,93/71,94 MM..... FUER 267 TL FOR 267 TL POUR 267 TL	N BED AS REQ A DEM.
12	N 215 800	R-RING IS2-68,9/63,7X1,5 PISTON RING IS2-68,9/63,7X1,5 SEGMENT IS2-68-9/63,7X1,5..... FUER 237 TL FOR 237 TL POUR 237 TL	2
12	215 235	ETL-RING IS2-72/65,6X2 SEMI-TRAPEZ RING 72,00 MM SEGMENT SEMI-TRAPEZ. 72,00 MM..... FUER 267 TL FOR 267 TL POUR 267 TL	1
13	916 187	KOLBENBOLZEN 18X11/15X58,7 PISTON PIN 18X11/15X58,7 AXE DE PISTON 18X11/15X58,7.....	1
14	945 735	NULLHAKENRING 18 / CIRCLIP 18 CIRCLIPS 18..... NUR 1 X VERWENDBAR USE ONLY ONCE UTILISER 1 FOIS SEULEMENT	2

BILD-NR.	TEILE-NR.	B E Z E I C H N U N G	STUECK
ILL. NO.	PART NO.	D E S C R I P T I O N	QTY.
ILL. NO.	REFERENCE	D E S C R I P T I O N	QTE.
15	294 869	KURBELWELLENSATZ / CRANKSHAFT REPAIR KIT KIT BIELLE.....	1
16	297 434	LOCTITE ANTI SEIZE 15378 LOCTITE ANTI SEIZE 15378 50 ML., LOCTITE ANTI SEIZE 15378 50 ML.,..... ZUR VERHINDERUNG VON PASSUNGSROST TO PREVENT METAL GALLING POUR PREVENIR LA CORROSION	N BED AS REQ A DEM.

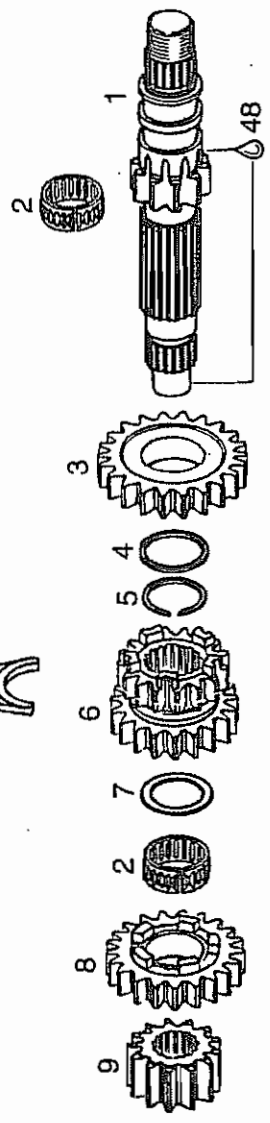
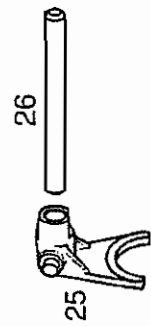
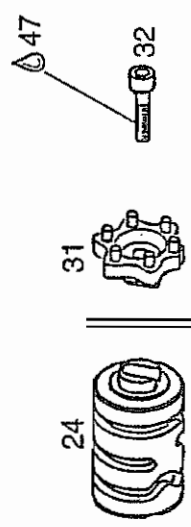
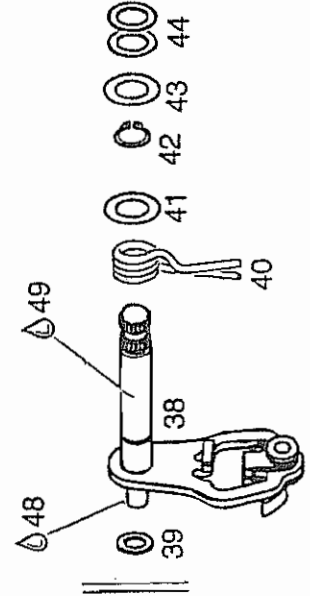
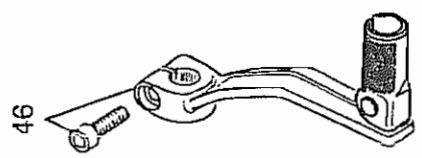
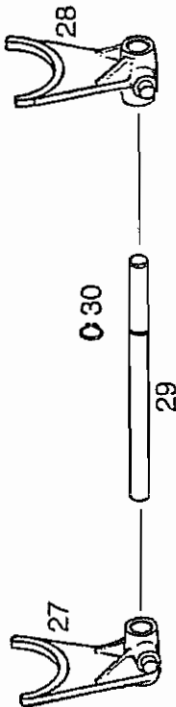
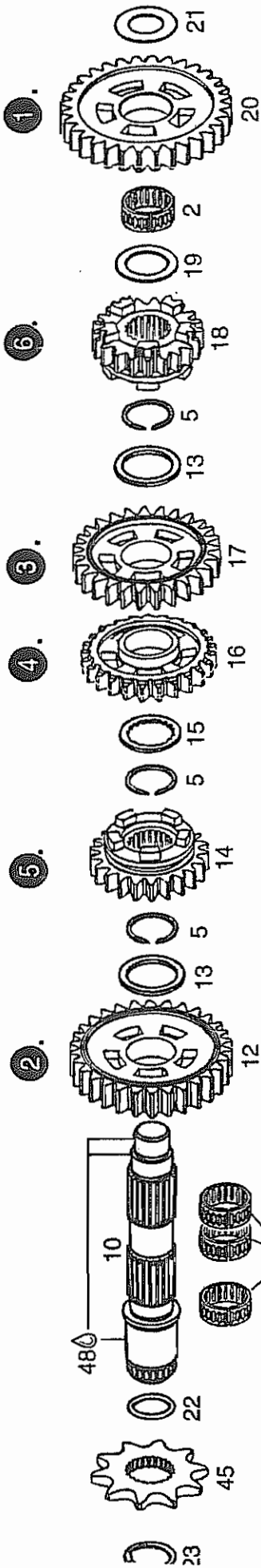


ZYLINDER, ZYLINDERKOPF, ANSAUGSTUTZEN
CYLINDER, CYLINDER HEAD, INTAKE SOCKET
CYLINDRE, CULASSE, PIPE D'ADMISSION

BILD-NR. ILL. NO. ILL. NO.	TEILE-NR. PART NO. REFERENCE	B E Z E I C H N U N G D E S C R I P T I O N D E S C R I P T I O N	STUECK QTY. QTE.
1	650 080	DICHTUNG 0,5 GASKET 0,3 JOINT 0,3.....	N BED AS REQ A DEM.
1	650 081	DICHTUNG 0,3 GASKET 0,5 JOINT 0,5.....	N BED AS REQ A DEM.
1	650 082	DICHTUNG 0,8 GASKET 0,8 JOINT 0,8.....	N BED AS REQ A DEM.
2	N 223 785	NIKASILZYLINDER / NIKASIL CYLINDER CYLINDRE NIKASIL..... FUER 237 TL FOR 237 TL POUR 237 TL	1
2	223 780	NIKASILZYLINDER / NIKASIL CYLINDER CYLINDRE NIKASIL..... FUER 267 TL FOR 267 TL POUR 267 TL	1
3	250 311	SCHEIBE 8,4 DIN 125 / WASHER 8,4 RONDELLE 8,4.....	4
4	942 671	SK-MUTTER M8 SW 11 / HEX. NUT M8 ECROU M8..... ANZUGSDREHMOMENT 25 NM TIGHTENING TORQUE 25 NM (220 IN.LB.) COUPLE DE SERRAGE 25 NM	4
5	230 705	O-RING DIN 3771-82X2-N / O-RING 82X2 JOINT TORIQUE 82X2.....	1
6	250 750	O-RING DIN 3771-129X2,5-N O-RING 129X2,5-N JOINT TORIQUE 129X2,5-N.....	1
7	N 223 807	ZYLINDERKOPF / CYLINDER HEAD / CULASSE... HELLGRAU FUER 237 TL LIGHT GRAY FOR 237 TL GRIS CLAIR POUR 237 TL	1

BILD-NR. ILL. NO. ILL. NO.	TEILE-NR. PART NO. REFERENCE	B E Z E I C H N U N G D E S C R I P T I O N D E S C R I P T I O N	STUECK QTY. QTE.
7	223 800	ZYLINDERKOPF / CYLINDER HEAD / CULASSE... HELLGRAU FUER 267 TL LIGHT GRAY FOR 267 TL GRIS CLAIR POUR 267 TL	1
8	940 636	SK-BUNDSCHRAUBE M8X45 SW 11 COLLAR-HEX. SCREW M8X45 SW 11 VIS A EPAULEMENT M8X45 SW 11..... ANZUGSDREHMOMENT 20 NM TIGHTENING TORQUE 20 NM (175 IN.LB.) COUPLE DE SERRAGE 20 NM	6
9	250 020	DICHTUNG / GASKET / JOINT.....	1
10	222 360	ABLAUFSTUTZEN / WATER OUTLET SOCKET RACCORD DE SORTIE D'EAU.....	1
11	941 925	TAPTITE-SCHRAUBE M5X16 TAPTITE SCREW M5X16 / VIS TAPTITE M5X16..	2
12	N 224 582	VENTILTRAEGER KPL. / REED VALVE ASSY., BOITE A CLAPETS CPL.....	1
13	267 991	VERGASERSTUTZEN / CARBURETOR FLANGE PIPE D'ADMISSION.....	1
14	840 861	ZYL.SCHRAUBE M6X25 DIN 912 ALLEN SCREW M6X25 / VIS BTR M6X25..... ANZUGSDREHMOMENT 6 NM TIGHTENING TORQUE 6 NM (50 IN.LB.) COUPLE DE SERRAGE 6 NM	4
15	251 850	SCHLAUCHSCHELLE 51 / HOSE CLAMP 51 COLLET 51.....	1
16	230 661	DICHTUNG / GASKET / JOINT.....	1
17	240 081	ZYL.SCHRAUBE M8X25 DIN 912 ALLEN SCREW M8X25 / VIS BTR M8X25..... ANZUGSDREHMOMENT 20 NM TIGHTENING TORQUE 20 NM (175 IN.LB.) COUPLE DE SERRAGE 20 NM	2

BILD-NR.	TEILE-NR.	B E Z E I C H N U N G	STUECK
ILL. NO.	PART NO.	D E S C R I P T I O N	QTY.
ILL. NO.	REFERENCE	D E S C R I P T I O N	QTE.
18	297 434	LOCTITE ANTI SEIZE 15378 LOCTITE ANTI SEIZE 15378 50 ML., LOCTITE ANTI SEIZE 15378 50 ML.,..... ZUR VERHINDERUNG VON PASSUNGSROST, 10 GR. TO PREVENT METAL GALLING POUR PREVENIR LA CORROSION	N BED AS REQ A DEM.
19	899 785	LOCTITE 221 VIOLETT LOCTITE 221 VIOLET, 10 CC., LOCTITE 221 VIOLET 10 C.C.,..... SCHRAUBENSICHERUNG NIEDRIGFEST, 10 CCM LOW STRENGTH BOND PATE FREIN FILET, FAIBLE	N BED AS REQ A DEM.



- 1.
- 2.
- 3.
- 4.
- 5.
- 6.
- 7.
- 8.
- 9.

**6-GANG GETRIEBE
6-SPEED TRANSMISSION
BOITE A 6 VITESSES**

BILD-NR. ILL. NO. ILL. NO.	TEILE-NR. PART NO. REFERENCE	B E Z E I C H N U N G D E S C R I P T I O N D E S C R I P T I O N	STUECK QTY. QTE.
1	220 110	VORGELEGEWELLE 10 Z / CLUTCH SHAFT 10 T. ARBRE PRIMAIRE 10 D.,..... 1. GANG 1ST SPEED 1ERE VITESSE	1
2	232 662	NADELKAEFIG K 20X24X10 NEEDLE BEARING 20X24X10 CAGE A AIGUILLES 20X24X10.....	3
3	235 445	LOSRAD 29 Z / FREE PINION 29 T. PIGNON FOU 29 D.,..... 6. GANG, VORGELEGEWELLE 6TH SPEED, CLUTCH SHAFT 6EME VITESSE, ARBRE PRIMAIRE	1
4	227 470	ANLAUFSSCHEIBE 24,2/27,5/1,5 THRUST WASHER 24,2/27,5/1,5 RONDELLE BUTEE 24,2/27,5/1,5.....	1
5	245 340	SPRENGRING 24 / SNAPRING 24 / CIRCLIPS 24	4
6	235 405	SCHALTRAD 15/19 Z / GEAR PINION 15/19 T., PIGNON CLIQUET 15/19 D.,..... 3. / 4. GANG, VORGELEGEWELLE 3RD / 4TH SPEED, CLUTCH SHAFT 3EME / 4EME VITESSE, ARBRE PRIMAIRE	1
7	227 440	ANLAUFSSCHEIBE 20,2/27,5/1 THRUST WASHER 20,2/27,5/1 RONDELLE BUTEE 20,2/27,5/1.....	1
8	234 866	LOSRAD 21 Z / FREE PINION 21 T., PIGNON FOU 21 D.,..... 5. GANG, VORGELEGEWELLE 5TH SPEED, CLUTCH SHAFT 5EME VITESSE, ARBRE PRIMAIRE	1
9	235 380	FESTRAD 12 Z / FIXED GEAR 12 T., PIGNON FIXE 12 D.,..... 2. GANG, VORGELEGEWELLE 2ND SPEED, CLUTCH SHAFT 2EME VITESSE, ARBRE PRIMAIRE	1
10	220 120	HAUPTWELLE / MAINSHAFT / ARBRE PRIMAIRE..	1

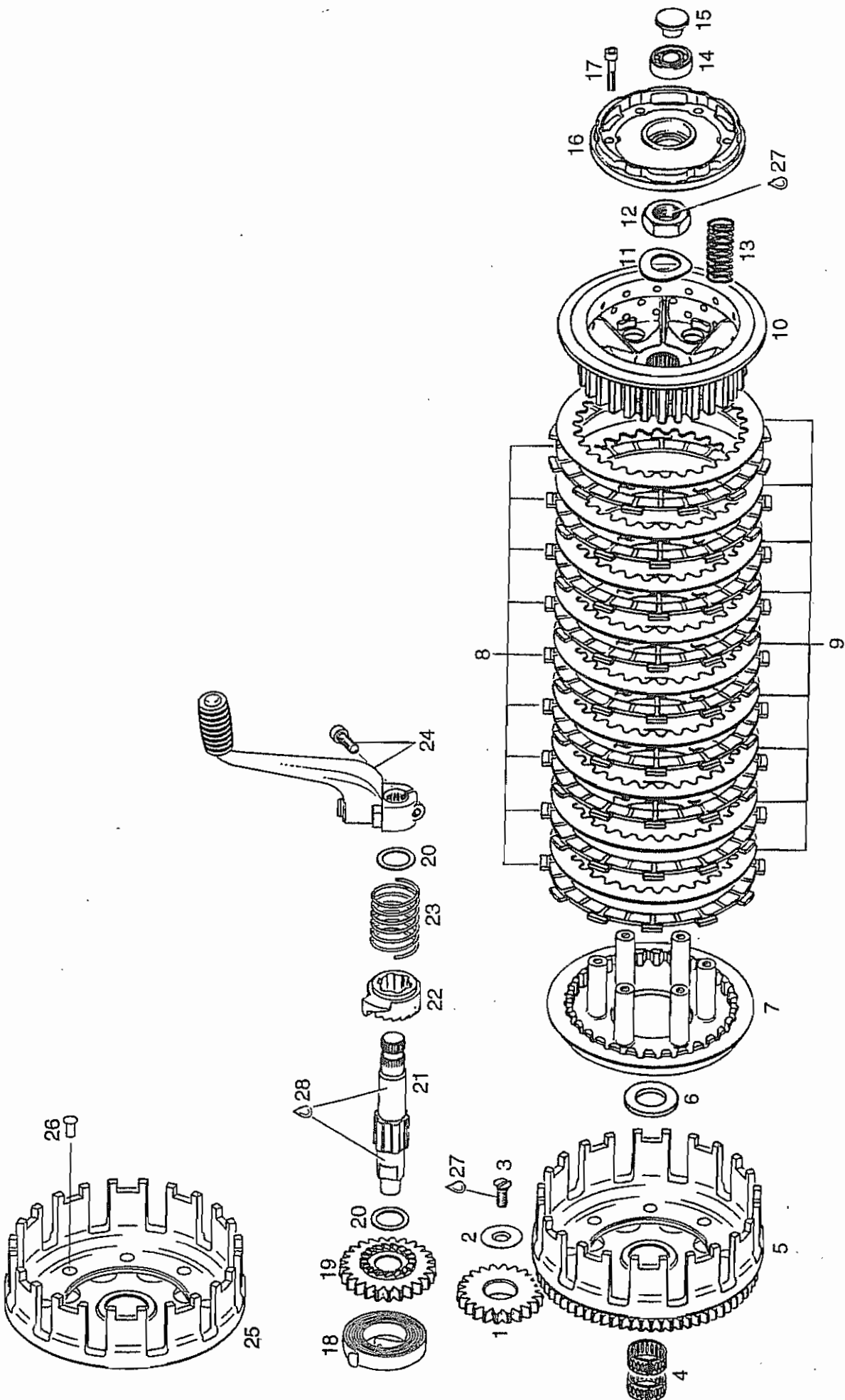
BILD-NR.	TEILE-NR.	B E Z E I C H N U N G	STUECK
ILL. NO.	PART NO.	D E S C R I P T I O N	QTY.
ILL. NO.	REFERENCE	D E S C R I P T I O N	QTE.
11	232 742	NADELKAEFIG K 21X25X10 TNK NEEDLE BEARING 21X25X10 CAGE A AIGUILLES 21X25X10.....	3
12	235 393	LOSRAD 32 Z / FREE PINION 32 T., PIGNON FOU 32 D.,..... 2. GANG, HAUPTWELLE 2ND SPEED, MAINSHAFT 2EME VITESSE, ARBRE SECONDAIRE	1
13	227 460	ANLAUFSSCHEIBE 22/30/1,8 THRUST WASHER 22/30/1,8 RONDELLE BUTEE 22/30/1,8.....	2
14	234 878	SCHALTRAD 23 Z / GEAR PINION 23 T., PIGNON CLIQUET 23 D.,..... 5. GANG, HAUPTWELLE 5TH SPEED, MAINSHAFT 5EME VITESSE, ARBRE SECONDAIRE	1
15	227 490	WINKELRING 22/30/2,8 ANGULAR RING 22/30/2,8 RONDELLE 22/30/2,8.....	1
16	235 425	LOSRAD 29 Z / FREE PINION 29 T., PIGNON FOU 29 D.,..... 4. GANG, HAUPTWELLE 4TH SPEED, MAINSHAFT 4EME VITESSE, ARBRE SECONDAIRE	1
17	235 415	LOSRAD 32 Z / FREE PINION 32 T., PIGNON FOU 32 D.,..... 3. GANG, HAUPTWELLE 3RD SPEED, MAINSHAFT 3EME VITESSE, ARBRE SECONDAIRE	1
18	235 435	SCHALTRAD 21 Z / GEAR PINION 21 T., PIGNON CLIQUET 21 D.,..... 6. GANG, HAUPTWELLE 6TH SPEED, MAINSHAFT 6EME VITESSE, ARBRE SECONDAIRE	1
19	944 468	ANLAUFSSCHEIBE 20,5/30/1 THRUST WASHER 20,5/30/1 RONDELLE BUTEE 20,5/30/1.....	1
20	234 800	LOSRAD 32 Z / FREE PINION 32 T., PIGNON FOU 32 D.,..... 1. GANG, HAUPTWELLE 1ST SPEED, MAINSHAFT 1ERE VITESSE	1

BILD-NR.	TEILE-NR.	B E Z E I C H N U N G	STUECK
ILL. NO.	PART NO.	D E S C R I P T I O N	QTY.
ILL. NO.	REFERENCE	D E S C R I P T I O N	QTE.
21	227 430	ANLAUFSSCHEIBE 17,2/30/1 THRUST WASHER 17,2/30/1 RONDELLE BUTEE 17,2/30/1.....	1
22	250 050	O-RING DIN 3771-18X2,5-N / O-RING 18-2,5 JOINT TORIQUE 18-2,5.....	1
23	245 650	SEEGER-V-RING AV 20 RETAINING RING AV 20 CIRCLIP EXTERIEUR AV 20.....	1
24	258 226	SCHALTWALZE KPL. / SHIFT DRUM ASSY., BARILLET DE SELECTION CPL.,.....	1
25	N 258 133	SCHALTGABEL / SHIFT FORK / FOURCHETTE.... 5./6. GANG 5TH/6TH SPEED 5EME/6EME VITESSE	1
26	258 205	SCHALTSTANGE / FORK SPINDLE AXE FOURCHETTE SELECTION..... 5./6. GANG 5TH/6TH SPEED 5EME/6EME VITESSE	1
27	N 258 123	SCHALTGABEL / GEARSHIFT FORK / FOURCHETTE 2./4. GANG 2ND/4TH SPEED 2EME/4EME VITESSE	1
28	N 258 113	SCHALTGABEL / GEARSHIFT FORK / FOURCHETTE 1./3. GANG 1ST/3RD SPEED 1ERE/3EME VITESSE	1
29	258 200	SCHALTSTANGE / FORK SPINDLE AXE FOURCHETTE SELECTION.....	1
30	245 570	SICHERUNGSRING 8X0,8 DIN 471 RETAINING RING 8X0,8 CIRCLIP EXTERIEUR 8X0,8.....	1
31	258 210	INDEXSCHEIBE / INDEX SHIM RONDELLE INDEX.....	1
32	840 861	ZYL.SCHRAUBE M6X25 DIN 912 ALLEN SCREW M6X25 / VIS BTR M6X25..... ANZUGSDREHMOMENT 10 NM TIGHTENING TORQUE 10 NM (85 IN.LB.) COUPLE DE SERRAGE 10 NM	1

BILD-NR. ILL. NO. ILL. NO.	TEILE-NR. PART NO. REFERENCE	B E Z E I C H N U N G D E S C R I P T I O N D E S C R I P T I O N	STUECK QTY. QTE.
33	248 325	INDEXHEBEL KPL. / INDEX LEVER ASSY. LEVIER D'INDEXION CPL.,.....	1
34	227 710	STUFENRING / STEP RING RONDELLE DECOLLETEE.....	1
35	239 240	INDEXFEDER / INDEX SPRING RESSORT D'INDEXION.....	1
36	240 580	TAPTITE-SCHRAUBE M6X16 TAPTITE SCREW M6X16 / VIS TAPTITE M6X16..	1
37	244 211	SCHEIBE 6,4 DIN 134 / WASHER 6,4 RONDELLE 6,4.....	1
38	220 187	SCHALTWELLE MIT KLINKE KPL. SHIFT SHAFT WITH PAWL ASSY. AXE SELECTEUR AVEC FOURCHETTE.....	1
39	944 033	SCHEIBE 8,4/14/1 / WASHER 8,4/14/1 RONDELLE 8,5/14/1.....	1
40	239 251	HAARNADELFEDER / SPRING / RESSORT.....	1
41	827 265	SCHEIBE 12,5/21,5/2 / WASHER 12,5/21,5/2 RONDELLE 12,5/21,5/2.....	1
42	945 470	SICHERUNGSRING 12X1 DIN 471 RETAINING RING 12X1 CIRCLIPS EXTERIEUR 12X1.....	1
43	227 450	ANLAUFSCHLEIBE 12,5/21,5/0,5 THRUST WASHER 12,5/21,5/0,5 RONDELLE BUTEE 12,5/21,5/0,5.....	1
44	944 382	AUSGLEICHSCHLEIBE 12,2/18,5/0,5 SHIM 12,1/18,5/0,5 CALE 12,1/18,5/0,5.....	N BED AS REQ A DEM.
44	944 383	AUSGLEICHSCHLEIBE 12,2/18,5/0,3 SHIM 12,1/18,5/0,3 CALE 12,1/18,5/0,3.....	N BED AS REQ A DEM.

BILD-NR.	TEILE-NR.	B E Z E I C H N U N G	STUECK
ILL. NO.	PART NO.	D E S C R I P T I O N	QTY.
ILL. NO.	REFERENCE	D E S C R I P T I O N	QTE.

45	236 067	KETTENRAD 10 Z SPROCKET 10 T. 5/8X1/4X10,16 PIGNON 10 D. 5/8X1/4X10,16..... 1 SERIENMAESSIG MONTIERT MOUNTED AS STANDARD MONTE STANDARD	
45	236 068	KETTENRAD 11 Z SPROCKET 11 T. 5/8X1/4X10,16 PIGNON 11 D. 5/8X1/4X10,16..... 1 OPTION OPTION OPTION	
46	N 248 236	FUSSSCHALTHEBEL KPL. / SHIFT LEVER ASSY. SELECTEUR CPL..... 1	
47	899 785	LOCTITE 221 VIOLETT LOCTITE 221 VIOLET, 10 CC., LOCTITE 221 VIOLET 10 C.C.,..... A DEM. LOCTITE 221 VIOLETT, 10 CCM., LOW STRENGTH BOND PATE FREIN FILET, FAIBLE	N BED AS REQ
48	297 434	LOCTITE ANTI SEIZE 15378 LOCTITE ANTI SEIZE 15378 50 ML., LOCTITE ANTI SEIZE 15378 50 ML.,..... A DEM. ZUR VERHINDERUNG VON PASSUNGSROST, 10 GR. TO PREVENT METAL GALLING POUR PREVENIR LA CORROSION	N BED AS REQ
49	897 330	LITHIUMSEIFENFETT LITHIUM-BASE GREASE, 250 GR., GRAISSE LITHIUM, 250 GR.,..... A DEM.	N BED AS REQ

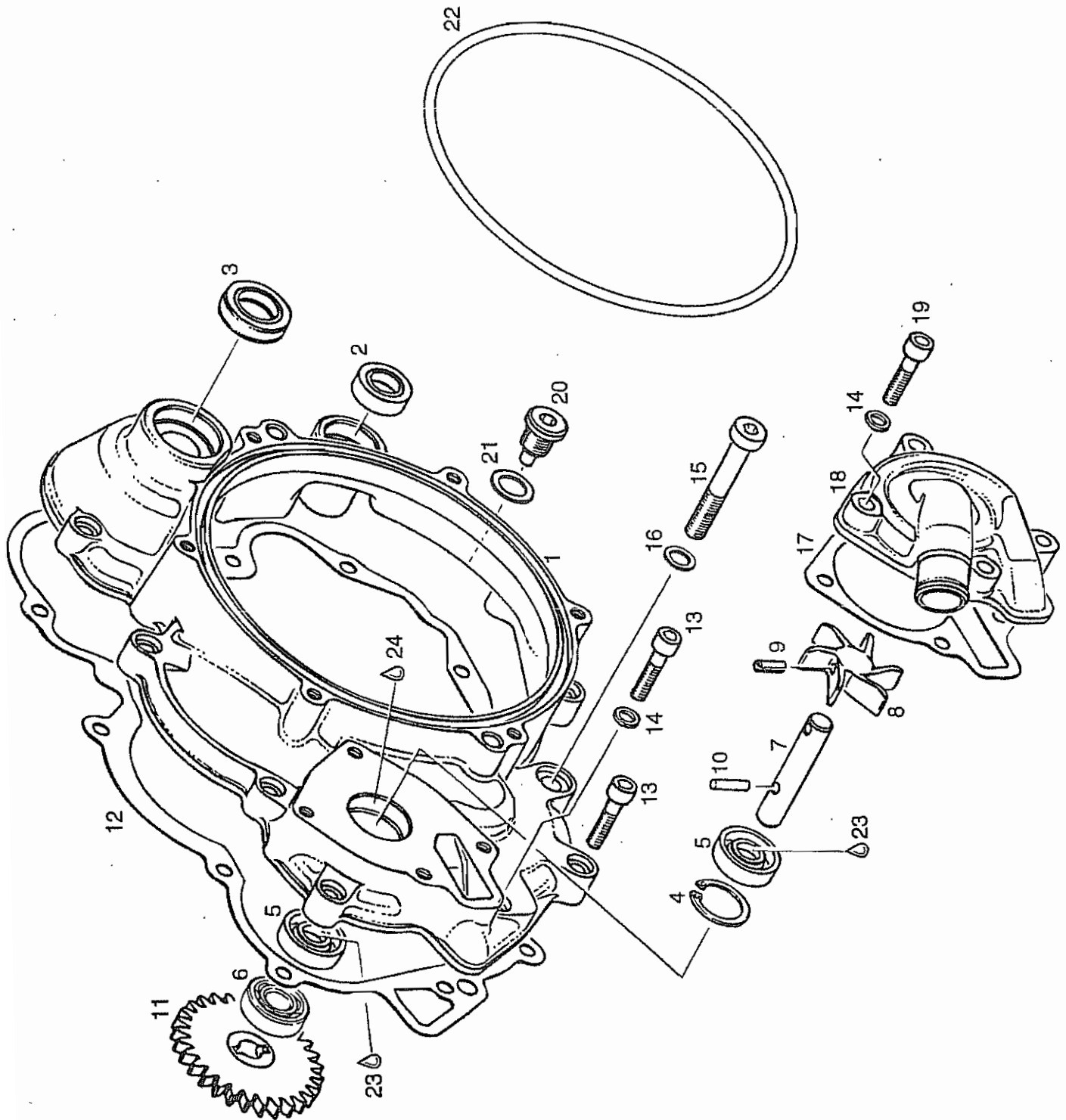


**KUPPLUNG, KICKSTARTER
CLUTCH, KICK START
EMBRAYAGE, KICKSTARTER**

BILD-NR. ILL. NO. ILL. NO.	TEILE-NR. PART NO. REFERENCE	B E Z E I C H N U N G D E S C R I P T I O N D E S C R I P T I O N	STUECK QTY. QTE.
1	634 170	ZWISCHENRAD 22 Z / IDLE GEAR ASSY. 22 T. PIGNON INTERMEDIAIRE CPL., 22 D.,	1
2	227 290	HALTESCHEIBE / THRUST WASHER RONDELLE BUTEE.....	1
3	240 300	SENKSCRAUBE M6X20 DIN 963 COUNTERSUNK SCREW M6X20 / VIS M6X20..... ANZUGSDREHMOMENT 8 NM TIGHTENING TORQUE 8 NM (65 IN.LB.) COUPLE DE SERRAGE 8 NM	1
4	232 742	NADELKAEFIG K 21X25X10 TNK NEEDLE BEARING 21X25X10 CAGE A AIGUILLES 21X25X10.....	2
5	294 831	PRIMAERTRIEB KPL. / PRIMARY DRIVE ASSY. TRANSMISSION PRIMAIRE CPL.,	1
		NUR ANTRIEBSRAD MIT KUPPLUNGSKORB GEMEINSAM AUSTAUSCHEN REPLACE ONLY DRIVE GEAR WITH CLUTCH DRUM ASSY. REEMPLACER IMPERATIVEMENT LA TRANSMISSION PRIMAIRE COMPLETE	
6	227 600	ANLAUFSCHIEBE 20,2/35/3 THRUST WASHER 20,2/35/3 RONDELLE BUTEE 20,2X35X3.....	1
7	259 889	STUETZTELLER / INNER PLATE CONTRE-PLAQUE.....	1
8	N 259 905	BELAGLAMELLE 2,6 MM FRICTION PLATE 2,6 MM DISQUE D'EMBRAYAGE GARNI, 2,6 MM.....	9
9	N 259 910	INNENLAMELLE / CLUTCH PLATE DISQUE D'EMBRAYAGE LISSE.....	9
10	259 874	MITNEHMER / CLUTCH HUB / NOIX D'EMBRAYAGE	1
11	245 680	FEDERSCHIEBE DIN 137-B18-FST SPRING WASHER / RONDELLE ELASTIQUE.....	1

BILD-NR.	TEILE-NR.	B E Z E I C H N U N G	STUECK
ILL. NO.	PART NO.	D E S C R I P T I O N	QTY.
ILL. NO.	REFERENCE	D E S C R I P T I O N	QTE.
12	942 220	SK-MUTTER M18X1,5 / HEX. NUT M18X1,5 ECROU HEX. M18X1,5.....	1
		ANZUGSDREHMOMENT 120 NM TIGHTENING TORQUE 120 NM (1000 IN.LB.) COUPLE DE SERRAGE 120 NM	
13	N 239 620	KUPPL.FEDER DM14,3 D2,1 L36,7 CLUTCH SPRING 36,7 MM RESSORT EMBRAYAGE 36,7 MM.....	3
		TYPE 237 TL, FEDERN NUR SATZWEISE AUSTAUSCHEN FN = 169 N BEI LN = 20,5 MM TYPE 237 TL, CHANGE SPRINGS ONLY SETWISE FN = 169 N AT LN = 20,5 MM TYPE 237 TL, REMPLACER TOUTE LA SERIE DE RESSORTS FN = 169 N A LN = 20,5 MM	
13	239 625	KUPPL.FEDER DM14,6 D2,3 L34,1 CLUTCH SPRING 34,1 MM RESSORT EMBRAYAGE 34,1 MM.....	3
		TYPE 267 TL, FEDERN NUR SATZWEISE AUSTAUSCHEN FN = 212 N BEI LN = 20,5 MM TYPE 267 TL, CHANGE SPRINGS ONLY SETWISE FN = 212 N AT LN = 20,5 MM TIPO 267 TL, REMPLACER TOUTE LA SERIE DE RESSORTS FN = 212 N A LN = 20,5 MM	
14	232 400	RK-LAGER 6001 C3 BALL BEARING 6001 C3, 12-28-8 ROULEMENT 6001 C3, 12-28-8.....	1
15	259 140	DRUCKPILZ / THRUST HUB / POUSSOIR.....	1
16	259 130	DRUCKPLATTE / RETAINING PLATE PLAQUE RESSORT.....	1
17	240 186	ZYL.SCHRAUBE M5X25 DIN 912 ALLEN SCREW M5X25 / VIS BTR M5X25.....	6
		ANZUGSDREHMOMENT 6 NM TIGHTENING TORQUE 6 NM (50 IN.LB.) COUPLE DE SERRAGE 6 NM	
18	239 260	KICKSTARTERFEDER / KICK STARTING SPRING RESSORT DE RAPPEL.....	1
19	634 050	STARTERRAD 25 Z KICK START GEAR ASSY. 27 T. PIGNON DE KICKSTARTER CPL.,27 D.....	1
20	244 585	AUSGLEICHSCHIEBE 17,5/24/1,0 SHIM 17,5/24/1,0 / CALE 1,0 MM.....	2

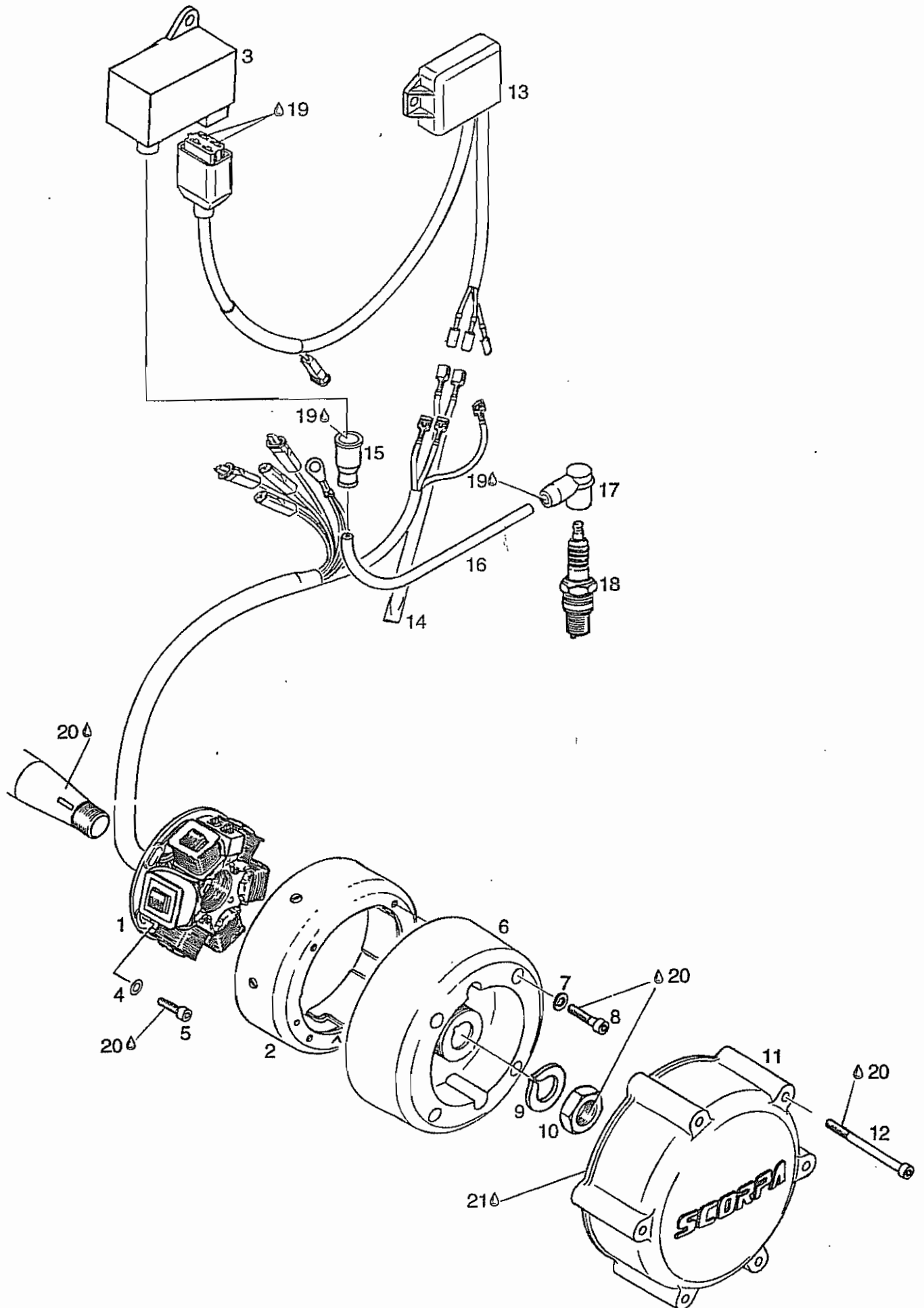
BILD-NR.	TEILE-NR.	B E Z E I C H N U N G	STUECK
ILL. NO.	PART NO.	D E S C R I P T I O N	QTY.
ILL. NO.	REFERENCE	D E S C R I P T I O N	QTE.
21	220 130	KICKSTARTERWELLE / KICK START SHAFT ARBRE DE KICK.....	1
22	228 220	SPERRAD / RATCHET GEAR / ROCHET.....	1
23	239 270	DRUCKFEDER DM29,5 D1,5 L42 COMPRESSION SPRING 42 MM / RESSORT 42 MM.	1
24	248 330	KICKSTARTERHEBEL KPL. KICK START LEVER ASSY. LEVIER DE KICK CPL.....	1
25	N 259 854	KUPPLUNGSKORB / CLUTCH DRUM CLOCHE D'EMBRAYAGE.....	1
26	243 340	SENKNIET 5X12 DIN 661 / RIVET 5X12 RIVET 5X12.....	8
27	899 785	LOCTITE 221 VIOLETT LOCTITE 221 VIOLET, 10 CC., LOCTITE 221 VIOLET 10 C.C.,..... LOCTITE 221, 10 CCM., LOW STRENGTH BOND PATE FREIN FILET, FAIBLE	N BED AS REQ A DEM.
28	297 431	LOCTITE-ANTI-SEIZE 76710 LOCTITE ANTI-SEIZE 76710 10 GR., LOCTITE ANTI-SEIZE 76710 10 GR.,..... ZUR VERHINDERUNG VON PASSUNGSROST TO PREVENT METAL GALLING POUR PREVENIR LA CORROSION	N BED AS REQ A DEM.



**KUPPLUNGSDECKEL, WASSERPUMPE
CLUTCH COVER, WATER PUMP
CARTER D'EMBRAYAGE, POMPE A EAU**

BILD-NR. ILL. NO. ILL. NO.	TEILE-NR. PART NO. REFERENCE	B E Z E I C H N U N G D E S C R I P T I O N D E S C R I P T I O N	STUECK QTY. QTE.
1	210 972	KUPPLUNGSDECKEL / CLUTCH COVER CARTER D'EMBRAYAGE..... HELLGRAU LIGHT-GRAY GRIS CLAIR	1
2	250 455	WD-RING AS 12X22X7 NBR / OIL SEAL 12X22X7 JOINT SPI 12X22X7.....	1
3	930 725	WD-RING AS 17X28X7 NBR / OIL SEAL 17X28X7 JOINT SPI 17X28X7.....	1
4	245 555	SEEGER-V-RING JV 26X1,2 / SNAPRING 26X1,2 CIRCLIPS 26X1,2.....	1
5	230 195	WD-RING A 10X26X7 NBR / OIL SEAL 10X26X7 JOINT SPI 10X26X7.....	2
6	232 100	RK-LAGER 6000 BALL BEARING 6000 10-26-8 ROULEMENT 6000 / 10-26-8.....	1
7	220 090	WASSERPUMPENWELLE / PUMP SHAFT ARBRE POMPE D'EAU.....	1
8	222 390	LAUFRAD / IMPELLER / TURBINE.....	1
9	229 280	SPANNHUELSE 4X16 DIN 1481 SLOTTED SPRING PIN 4X16 DOUILLE FENDUE 4X16.....	1
10	232 730	NADELROLLE 4X15,8 G3 DIN 5402 PEG 4X15,8 / GOUPILLE 4X15,8.....	1
11	634 152	WASSERPUMPENRAD 29 Z / PUMP GEAR 29 T PIGNON POMPE A EAU 29 D.,.....	1
12	250 700	DICHTUNG / GASKET / JOINT.....	1
13	840 861	ZYL.SCHRAUBE M6X25 DIN 912 ALLEN SCREW M6X25 / VIS BTR M6X25..... ANZUGSDREHMOMENT 10 NM TIGHTENING TORQUE 10 NM (88 IN.LB.) COUPLE DE SERRAGE 10 NM	11

BILD-NR. ILL. NO. ILL. NO.	TEILE-NR. PART NO. REFERENCE	B E Z E I C H N U N G D E S C R I P T I O N D E S C R I P T I O N	STUECK QTY. QTE.
14	230 415	DICHTRING A 6X10 DIN 7603 GASKET RING A 6X10 RONDELLE JOINT A 6X10.....	2
15	240 711	ZYL.SCHRAUBE M8X50 DIN 7984 ALLEN SCREW M8X50 / VIS BTR M8X50..... ANZUGSDREHMOMENT 17 NM TIGHTENING TORQUE 17 NM (150 IN.LB.) COUPLE DE SERRAGE 17 NM	1
16	950 141	DICHTRING A 8X13 DIN 7603 GASKET RING A 8X13 RONDELLE JOINT A 8X13.....	1
17	N 250 691	DICHTUNG / GASKET / JOINT.....	1
18	222 370	WASSERPUMPENGEHAEUSE / WATER PUMP HOUSING CORPS POMPE A EAU..... HELLGRAU LIGHT-GRAY GRIS CLAIR	1
19	840 861	ZYL.SCHRAUBE M6X25 DIN 912 ALLEN SCREW M6X25 / VIS BTR M6X25..... ANZUGSDREHMOMENT 10 NM TIGHTENING TORQUE 10 NM (88 IN.LB.) COUPLE DE SERRAGE 10 NM	4
20	241 782	MAGNETSCHRAUBE M12X1,5 MAGNETIC DRAIN PLUG M12X1,5 VIS MAGNETIQUE M12X1,5.....	1
21	250 641	DICHTRING A 12X18 DIN 7603 GASKET RING A 12X18 RONDELLE JOINT A 12X18.....	1
22	250 710	O-RING DIN 3771-150X4-N / O-RING 150X4 JOINT TORIQUE 150X4.....	1
23	897 161	MOLYKOTE 111 MOLYKOTE 111, 100 GR MOLYKOTE 111, 100 GR.,..... SILIKONFETT, 100 GR., SILICONE GREASE GRAISSE SILICONE	N BED AS REQ A DEM.
24	.	SCHMIEROEL LUBRICATING OIL HUILE	N BED AS REQ A DEM.



MAGNETZUENDER-GENERATOR 12V 60/40/20W, ZUENDERDECKEL
 MAGNETO GENERATOR 12V 60/40/20W, IGNITION COVER
 ALLUMAGE 12V 60/40/20W, COUVERCLE D'ALLUMAGE

TYPE 237 TL:

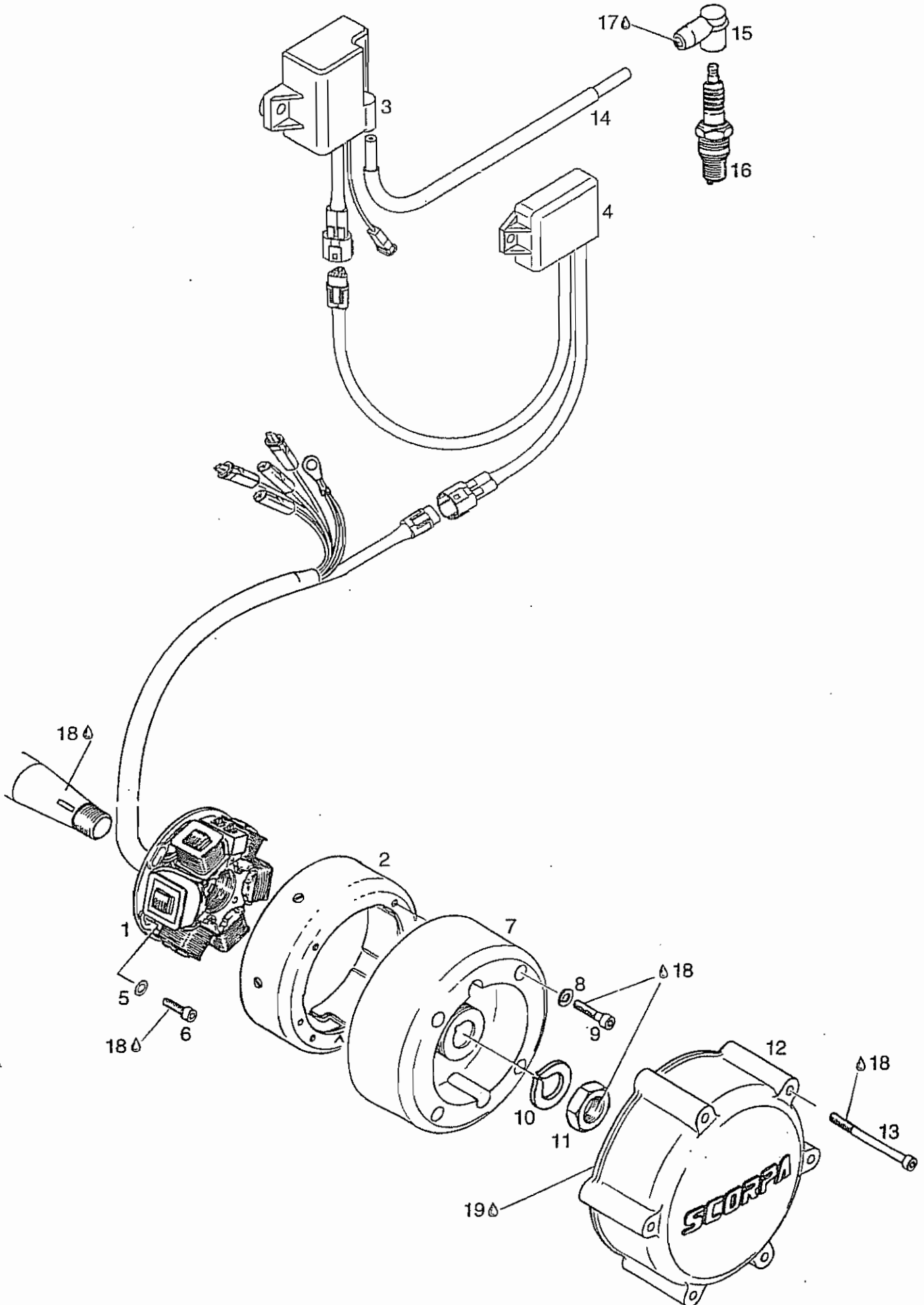
BIS MOTOR NR. / UP TO ENGINE NO. / ~~JUSQU'AU~~ NO. MOTEUR 425442

TYPE 267 TL:

BIS MOTOR NR. / UP TO ENGINE NO. / ~~JUSQU'AU~~ NO. MOTEUR 376470

BILD-NR.	TEILE-NR.	B E Z E I C H N U N G	STUECK
ILL. NO.	PART NO.	D E S C R I P T I O N	QTY.
ILL. NO.	REFERENCE	D E S C R I P T I O N	QTE.
1 - 3	N 295 276	MZ-GENERATOR / MAGNETO GENERATOR ALLUMAGE.....	1
1	N 294 429	ANKERPLATTE KPL. / STATOR ASSY. STATOR CPL.....	1
2	N 294 418	MAGNETRING AVJ 5123R / MAGNETO FLYWHEEL VOLANT MAGNETIQUE.....	1
3	N 265 018	ELEKTRONIKBOX / ELECTRONIC BOX BOITIER ELECTRONIQUE.....	1
4	927 571	SCHEIBE 5,3 DIN 125 / WASHER 5,3 RONDELLE 5,3.....	4
5	240 150	ZYL.SCHRAUBE M5X14 DIN 6912 ALLEN SCREW M5X14 / VIS BTR M5X14..... ANZUGSDREHMOMENT 6 NM TIGHTENING TORQUE 6 NM (50 IN.LB.) COUPLE DE SERRAGE 6 NM	4
6	265 370	SCHWUNGRAD / FLYWHEEL / MASSE D'INERTIE..	1
7	945 750	FEDERRING DIN 128-A5-FST / LOCK WASHER A5 RONDELLE FREIN A5.....	4
8	240 186	ZYL.SCHRAUBE M5X25 DIN 912 ALLEN SCREW M5X25 / VIS BTR M5X25..... ANZUGSDREHMOMENT 6 NM TIGHTENING TORQUE 6 NM (50 IN.LB.) COUPLE DE SERRAGE 6 NM	4
9	945 757	SPERRKANTRING 18 DIN 128 A LOCK WASHER 18 / RONDELLE FREIN 18.....	1
10	942 220	SK-MUTTER M18X1,5 / HEX. NUT M18X1,5 ECROU HEX. M18X1,5..... ANZUGSDREHMOMENT 100 NM TIGHTENING TORQUE 100 NM (880 IN.LB.) COUPLE DE SERRAGE 100 NM	1

BILD-NR. ILL. NO. ILL. NO.	TEILE-NR. PART NO. REFERENCE	B E Z E I C H N U N G D E S C R I P T I O N D E S C R I P T I O N	STUECK QTY. QTE.
11	211 370	ZUENDERDECKEL / IGNITION COVER COUVERCLE D'ALLUMAGE.....	1
12	241 041	ZYL.SCHRAUBE M5X70 DIN 912 ALLEN SCREW M5X70 / VIS BTR M5X70..... ANZUGSDREHMOMENT 4,5 NM TIGHTENING TORQUE 4,5 NM (40 IN.LB.) COUPLE DE SERRAGE 4,5 NM	6
13	N 264 765	ZUENDVERSTELLER / IGNITION TIMING LIMITER LIMITEUR AVANCE ALLUMAGE.....	1
14	N 264 357	FOLIENKONDENSATOR 100NF 100V CAPACITOR 100 NF 100V CONDENSATEUR 100 NF 100V.....	N BED AS REQ A DEM.
15	960 550	REGENSCHUTZKAPPE / PROTECTION CAP CAPUCHON DE PROTECTION.....	1
16	264 123	ZUENDLEITUNG 170 MM IGNITION CABLE 170 MM CABLE ALLUMAGE 170 MM.....	1
17	866 708	WIDERSTANDSSTECKER / SPARK PLUG CONNECTOR CAPUCHON BOUGIE.....	1
18 ZUENDKERZE SPARK PLUG BOUGIE	1
19	897 330	LITHIUMSEIFENFETT LITHIUM-BASE GREASE, 250 GR., GRAISSE LITHIUM, 250 GR.,..... 250 GR.,	N BED AS REQ A DEM.
20	899 785	LOCTITE 221 VIOLETT LOCTITE 221 VIOLET, 10 CC., LOCTITE 221 VIOLET 10 C.C.,..... LOCTITE 221 VIOLETT, 10 CCM., LOW STRENGTH BOND PATE FREIN FILET, FAIBLE	N BED AS REQ A DEM.
21	297 386	SILASTIC 732 RTV SILASTIC 732 RTV, 100 GR., SILASTIC 732 RTV, 100 GR.,..... BEI ZUENDERDECKEL WASSERABLAUFRILLE OFFEN LASSEN KEEP WATER DRAIN GROOVE OF IGNITION COVER CLEAR OF SILASTIC PAS DE SILASTIC A LA RAINURE PURGE D'EAU AU COUVERCLE D'ALLUMAGE	N BED AS REQ A DEM.



MAGNETZUENDER-GENERATOR 12V 60/40/20W, ZUENDERDECKEL
 MAGNETO GENERATOR 12V 60/40/20W, IGNITION COVER
 ALLUMAGE 12V 60/40/20W, COUVERCLE D'ALLUMAGE

TYPE 237 TL:

AB MOTOR NR. / FROM ENGINE NO. / JUSQU'AU NO. MOTEUR 425443

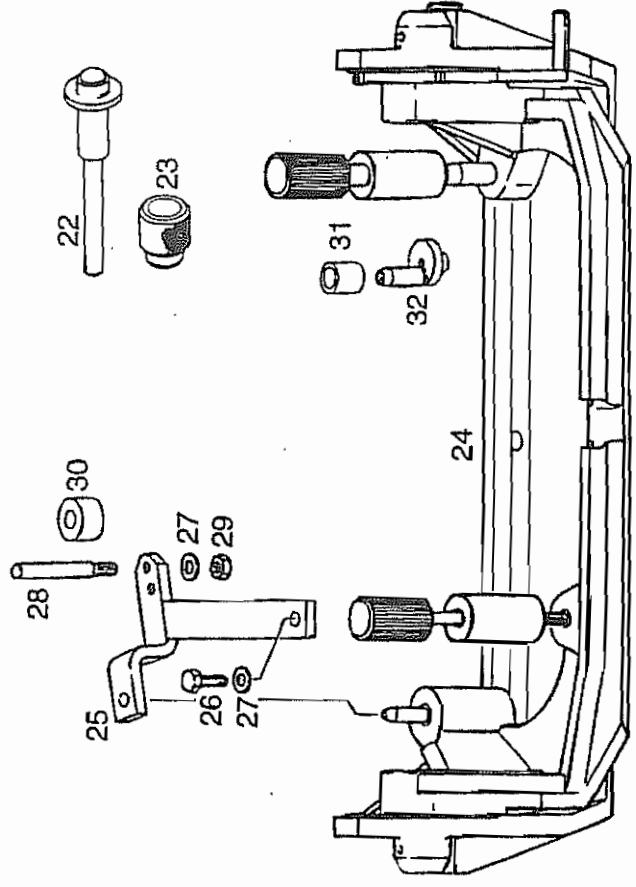
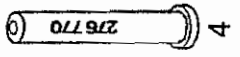
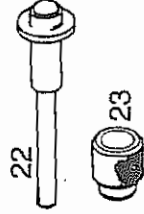
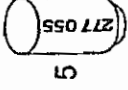
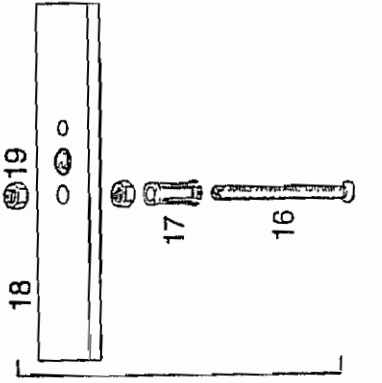
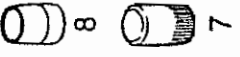
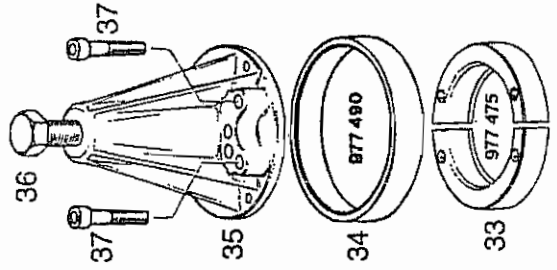
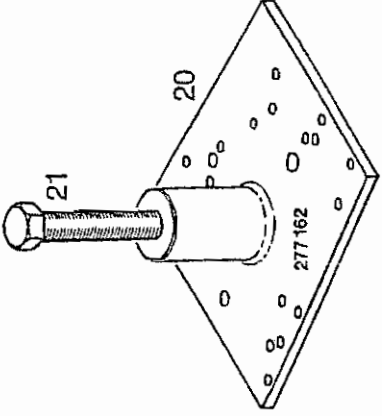
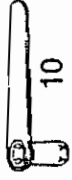
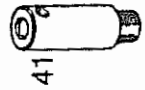
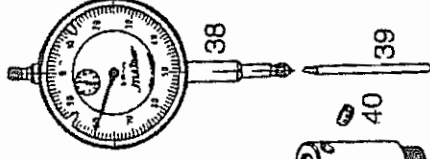
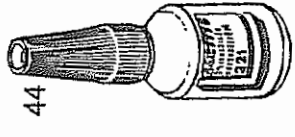
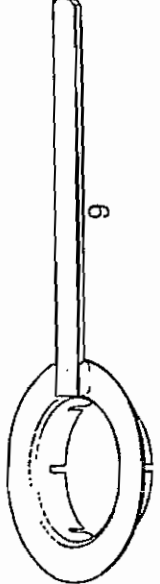
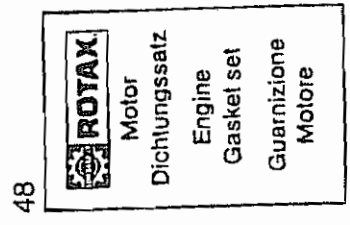
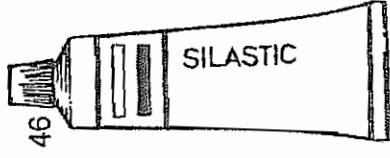
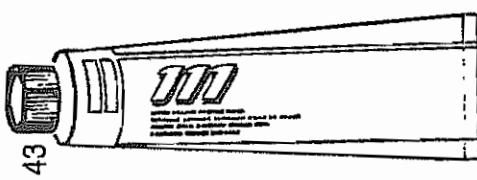
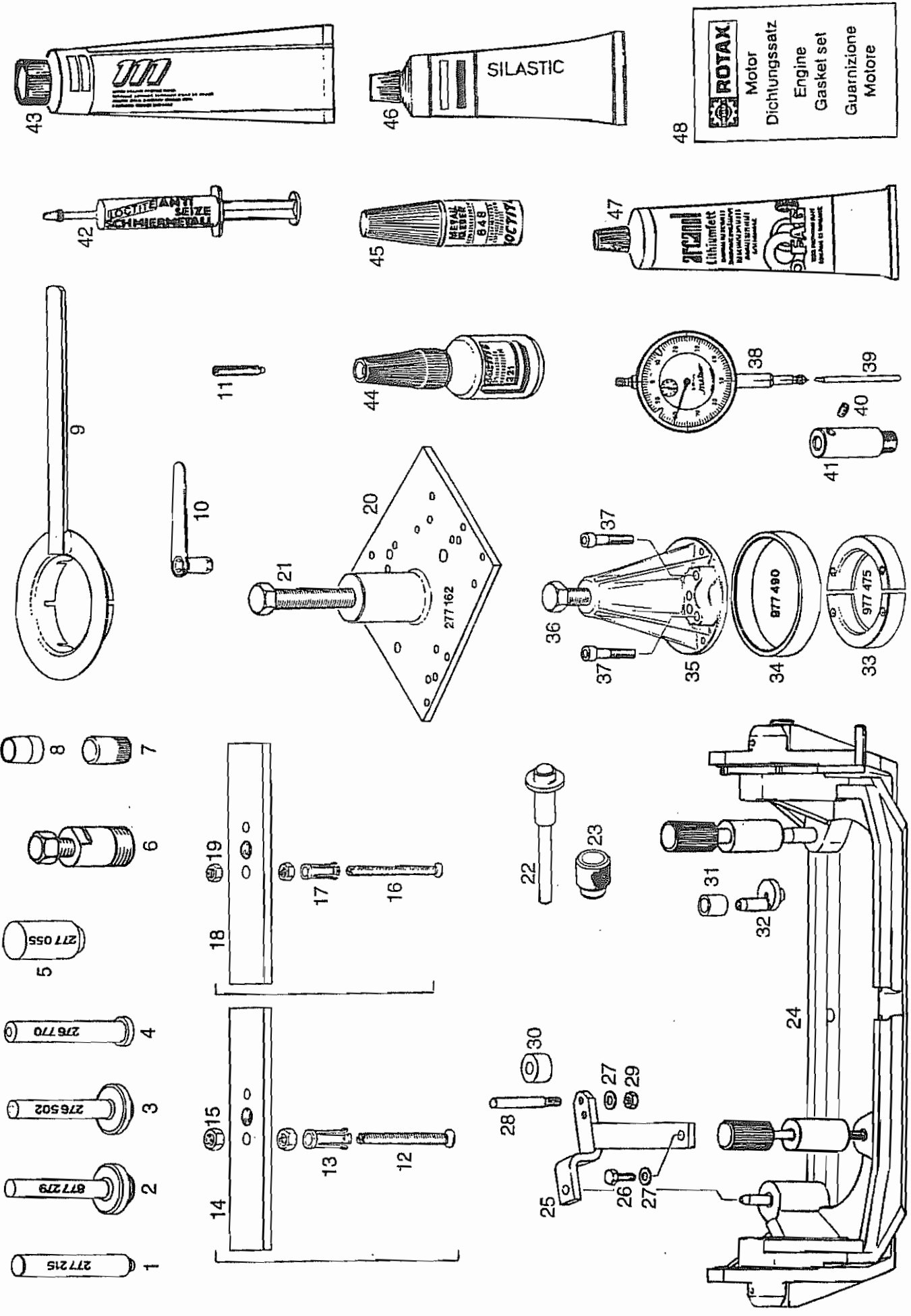
TYPE 267 TL:

AB MOTOR NR. / FROM ENGINE NO. / JUSQU'AU NO. MOTEUR 376471

BILD-NR.	TEILE-NR.	B E Z E I C H N U N G	STUECK
ILL. NO.	PART NO.	D E S C R I P T I O N	QTY.
ILL. NO.	REFERENCE	D E S C R I P T I O N	QTE.
1 - 2	N 295 279	MZ-GENERATOR / MAGNETO GENERATOR ALLUMAGE.....	1
1	N 294 427	ANKERPLATTE KPL. / STATOR ASSY. STATOR CPL.....	1
2	N 294 418	MAGNETRING AVJ 5123R / MAGNETO FLYWHEEL VOLANT MAGNETIQUE.....	1
3	N 265 019	ELEKTRONIKBOX KPL. / ELECTRONIC BOX BOITIER ELECTRONIQUE.....	1
4	N 264 767	ZUENDVERSTELLER / IGNITION TIMING LIMITER LIMITEUR AVANCE ALLUMAGE.....	1
5	927 571	SCHEIBE 5,3 DIN 125 / WASHER 5,3 RONDELLE 5,3.....	4
6	240 150	ZYL.SCHRAUBE M5X14 DIN 6912 ALLEN SCREW M5X14 / VIS BTR M5X14..... ANZUGSDREHMOMENT 6 NM TIGHTENING TORQUE 6 NM (50 IN.LB.) COUPLE DE SERRAGE 6 NM	4
7	265 370	SCHWUNGRAD / FLYWHEEL / MASSE D'INERTIE...	1
8	945 750	FEDERRING DIN 128-A5-FST / LOCK WASHER A5 RONDELLE FREIN A5.....	4
9	240 186	ZYL.SCHRAUBE M5X25 DIN 912 ALLEN SCREW M5X25 / VIS BTR M5X25..... ANZUGSDREHMOMENT 6 NM TIGHTENING TORQUE 6 NM (50 IN.LB.) COUPLE DE SERRAGE 6 NM	4
10	945 757	SPERRKANTRING 18 DIN 128 A LOCK WASHER 18 / RONDELLE FREIN 18.....	1

3 Seite / page

BILD-NR. ILL. NO. ILL. NO.	TEILE-NR. PART NO. REFERENCE	B E Z E I C H N U N G D E S C R I P T I O N D E S C R I P T I O N	STUECK QTY. QTE.
11	942 220	SK-MUTTER M18X1,5 / HEX. NUT M18X1,5 ECROU HEX. M18X1,5..... ANZUGSDREHMOMENT 100 NM TIGHTENING TORQUE 100 NM (880 IN.LB.) COUPLE DE SERRAGE 100 NM	1
12	211 370	ZUENDERDECKEL / IGNITION COVER COUVERCLE D'ALLUMAGE.....	1
13	241 041	ZYL.SCHRAUBE M5X70 DIN 912 ALLEN SCREW M5X70 / VIS BTR M5X70..... ANZUGSDREHMOMENT 4,5 NM TIGHTENING TORQUE 4,5 NM (40 IN.LB.) COUPLE DE SERRAGE 4,5 NM	6
14	264 123	ZUENDLEITUNG 170 MM IGNITION CABLE 170 MM CABLE ALLUMAGE 170 MM.....	1
15	866 708	WIDERSTANDSSTECKER / SPARK PLUG CONNECTOR CAPUCHON BOUGIE.....	1
16	1
		ZUENDKERZE SPARK PLUG BOUGIE	
17	897 330	LITHIUMSEIFENFETT LITHIUM-BASE GREASE, 250 GR., GRAISSE LITHIUM, 250 GR.,..... 250 GR.,	N BED AS REQ A DEM.
18	899 785	LOCTITE 221 VIOLETT LOCTITE 221 VIOLET, 10 CC., LOCTITE 221 VIOLET 10 C.C.,..... LOCTITE 221 VIOLETT, 10 CCM., LOW STRENGTH BOND PATE FREIN FILET, FAIBLE	N BED AS REQ A DEM.
19	297 386	SILASTIC 732 RTV SILASTIC 732 RTV, 100 GR., SILASTIC 732 RTV, 100 GR.,..... BEI ZUENDERDECKEL WASSERAUFLAUFRILLE OFFEN LASSEN KEEP WATER DRAIN GROOVE OF IGNITION COVER CLEAR OF SILASTIC PAS DE SILASTIC A LA RAINURE PURGE D'EAU AU COUVERCLE D'ALLUMAGE	N BED AS REQ A DEM.



REPARATURWERKZEUGE, DICHTUNGSSATZ
REPAIR TOOLS, GASKET SET
OUTILS POUR REPARATION, POCHETTE DE JOINT

BILD-NR. ILL. NO. ILL. NO.	TEILE-NR. PART NO. REFERENCE	B E Z E I C H N U N G D E S C R I P T I O N D E S C R I P T I O N	STUECK QTY. QTE.
1	277 215	MONTAGESTEMPEL / INSERTION JIG POUSSOIR JOINT SPI..... FUER WD-RING 250 455, SCHALTWELLE FOR OIL SEAL 250 455, SHIFT SHAFT POUR JOINT SPI 250 455, AXE SELECTEUR	1
2	877 279	MONTAGESTEMPEL KPL. INSERTION JIG ASSY., POUSSOIR JOINT SPI CPL.,..... FUER WD-RING 230 425, KURBELWELLE FOR OIL SEAL 230 425, CRANKSHAFT POUR JOINT 230 425, VILEBREQUIN	1
3	276 502	MONTAGESTEMPEL KPL. INSERTION JIG ASSY., POUSSOIR JOINT SPI CPL.,..... FUER WD-RING 830 602, HAUPTWELLE MAGNETSEITIG FOR OIL SEAL 830 602, MAIN SHAFT MAGNETO-SIDE POUR JOINT SPI 830 602 ARBRE SECONDAIRE, COTE ALLUMAGE	1
4	276 770	MONTAGESTEMPEL / INSERTION JIG POUSSOIR JOINT SPI..... FUER WD-RING 230 195 U. 930 725 PUMPENWELLE UND KICKSTARTERWELLE FOR OIL SEAL 230 195 AND 930 725 PUMP SHAFT AND KICKSTART SHAFT ALBERO POMPA E ALBERO M/M POUR JOINTS SPI 230 195 ET 930 725, AXE DE POMPE ET ARBRE KICK	1
5	277 055	MONTAGESTEMPEL / INSERTION JIG POUSSOIR JOINT SPI..... ZUM AUSBAU VON RK-LAGER 932 825 UND 232 766, HAUPTWELLE, MAGNETSEITIG, UND VORGELEGEWELLE, KUPPLUNGSSEITG TO REMOVE BALL BEARING 932 825 AND 232 766, MAIN SHAFT, MAGNETO SIDE, AND CLUTCH SHAFT, CLUTCH SIDE POUR MONTAGE DES ROULEMENTS 932 825 ET 232 766 ARBRE SECONDAIRE, COTE ALLUMAGE, ET ARBRE PRIMAIRE, COTE EMBRAYAGE	1

BILD-NR. ILL. NO. ILL. NO.	TEILE-NR. PART NO. REFERENCE	B E Z E I C H N U N G D E S C R I P T I O N D E S C R I P T I O N	STUECK QTY. QTE.
6	277 807	ABZIEHER M35X1,5 KPL. PULLER ASSY. M35X1,5 EXTRACTEUR CPL. M35X1,5..... FUER MAGNETRAD FOR FLYWHEEL POUR VOLANT MAGNETIQUE	1
7	276 920	SCHUTZKAPPE / PROTECTION CAP CAPUCHON PROTECTEUR..... FUER KURBELWELLE FOR CRANKSHAFT POUR VILEBREQUIN	1
8	277 970	FUEHRUNGSHUELSE / GUIDE SLEEVE / GUIDE... FUER WD-RING 830 602, HAUPTWELLE FOR OIL SEAL 830 602, MAIN SHAFT POUR JOINT SPI 830 602, ARBRE SECONDAIRE	1
9	276 825	MITNEHMERFIXIERUNG KPL. CLUTCH HUB LOCKING TOOL ASSY., BLOCAGE DE MOYEU EMBRAYAGE CPL.,.....	1
10	276 040	KONTERSCHLUESSEL / WRENCH 11 MM CLE REGLAGE EMBRAYAGE 11 MM..... ZUM KUPPLUNGSSPIEL EINSTELLEN FOR CLUTCH PLAY ADJUSTMENT POUR REGLER LE JEU D'EMBRAYAGE	1
11	240 880	GEWINDESTIFT DIN 915-M8X50 THREAD BOLT M8X50 / VIS ERGOT M8X50..... ZUM FIXIEREN DER KURBELWELLE FOR CRANKSHAFT LOCKING POUR IMMOBILISATION DU VILEBREQUIN	1
12 - 15 LAGERAUSZIEHER KPL, FUER NADELLAGER 232 600, AUSGLEICHSWELLE, MAGNETSEITIG PULLER ASSY., FOR NEEDLE BEARING 232 600 BALANCE SHAFT, MAGNETO-SIDE EXTRACTEUR CPL., POUR CAGE A AIGUILLES 232 600, BALANCIER D'EQUILIBRAGE, COTE ALLUMAGE	1
12	276 380	AUSZIEHBOLZEN / BOLT M10 VIS DE TRACTION M10.....	1
13	276 375	SPREIZHUELSE / EXTRACTOR SLEEVE DOUILLE FENDUE..... FUER RK-LAGER 6304 FOR BALL BEARING 6304 POUR ROULEMENT 6304	1
14	276 390	ABSTUETZLEISTE / SUPPORT PLATE PLAQUE D'APPUI.....	1

BILD-NR. ILL. NO. ILL. NO.	TEILE-NR. PART NO. REFERENCE	B E Z E I C H N U N G D E S C R I P T I O N D E S C R I P T I O N	STUECK QTY. QTE.
15	242 091	SK-MUTTER M10 DIN 934 / HEX.NUT M10 ECROU HEX. M10.....	2
16 - 19		1
		LAGERAUSZIEHER KPL., FUER RK-LAGER 232 291, VORGELEGEWELLE, MAGNETSEITIG PULLER ASSY., FOR BALL BEARING 232 291 CLUTCH SHAFT, MAGNETO-SIDE EXTRACTEUR DE ROULEMENT 232 291, ARBRE PRIMAIRE, COTE ALLUMAGE	
16	276 385	AUSZIEHBOLZEN / BOLT / VIS DE TRACTION...	1
17	276 372	SPREIZHUELSE / EXTRACTOR SLEEVE DOUILLE FENDUE..... FUER RK-LAGER 6302 FOR BALL BEARING 6302 POUR ROULEMENT 6302	1
18	276 390	ABSTUETZLEISTE / SUPPORT PLATE PLAQUE D'APPUI.....	1
19	242 206	SK-MUTTER M8 DIN 934 / HEX. NUT M8 ECROU HEX. M8.....	1
20 - 21	277 162	ABDRUECKPLATTE KPL. / PULLER PLATE ASSY., PLAQUE DIEXTRACTION CPL.,..... ZUM AUSDRUECKEN DER KURBELWELLE FOR REMOVE CRANKSHAFT POUR VILEBREQUIN	1
21	940 755	SK-SCHRAUBE M16X1,5X150 DIN961 HEX. SCREW M16X1,5X150 VIS 6 PANS M16X1,5X150.....	1
22 - 23	877 015	MONTAGEDORN KPL. CIRCLIP INSTALLATION TOOL ASSY., POUSSOIR MONTAGE CIRCLIPS CPL.,..... ZUM MONTIEREN DER KOLBENBOLZENSICHERUNGEN TO MOUNT PISTON PIN CIRCLIPS OUTIL MONTAGE CIRCLIPS DE PISTON CPL.	1
22	877 010	MONTAGEDORN / CIRCLIP INSTALLATION PUSHER POUSSOIR MONTAGE CIRCLIPS.....	1
23	877 020	MONTAGEHUELSE CIRCLIP INSTALLATION SLEEVE DOUILLE MONTAGE CIRCLIPS.....	1
24	277 917	MONTAGEBOCK KPL. / TRESTLE ASSY., CHEVALET MOTEUR CPL.,.....	1

BILD-NR. ILL. NO. ILL. NO.	TEILE-NR. PART NO. REFERENCE	B E Z E I C H N U N G D E S C R I P T I O N D E S C R I P T I O N	STUECK QTY. QTE.
25 - 31	277 107	MONTAGEBOCKAUFNAHMESATZ INSERT KIT FOR TRESTLE ELEMENTS DE MONT. POUR CHEVALET.....	1
25	277 100	ADAPTER KPL. / ADAPTOR ASSY., ADAPTEUR CPL.,.....	1
26	940 590	SK-SCHRAUBE M8X20 DIN 933 HEX. SCREW M8X20 / VIS 6 PANS M8X20.....	1
27	250 311	SCHEIBE 8,4 DIN 125 / WASHER 8,4 RONDELLE 8,4.....	2
28	277 110	AUFNAHMEBOLZEN / BOLT / BOULON D'APPUI...	1
29	242 206	SK-MUTTER M8 DIN 934 / HEX. NUT M8 ECROU HEX. M8.....	1
30	847 160	DISTANZHUELSE 10,5/24/15 SPACER 10,5/24/15 / ENTRETOISE 10,5/24/15	1
31	847 230	DISTANZHUELSE 15,2/22/18 DISTANCE SLEEVE 15,2/22/18 ENTRETOISE 15,2/22/18.....	1
32	276 662	EXZENTERHUELSE / ECCENTRIC SLEEVE DOUILLE EXCENTRIQUE.....	1
33	977 475	RINGHAELFTE / RING HALF DEMI-BAGUE EXTRACTEUR..... FUER RILLENKUGELLAGER 6306, KURBELWELLE FOR BALL BEARING 6306, CRANKSHAFT POUR ROULEMENT 6306, VILEBREQUIN	2
34	977 490	RING / RING / ANNEAU DE BLOCAGE..... FUER RINGHAELFTEN FOR RING HALVES POUR DEMI-BAGUES	1
35 - 36	876 298	ABZIEHER KPL. / PULLER ASSY., EXTRACTEUR DE ROULEMENT CPL.,..... FUER RK-LAGER 6306, KURBELWELLE FOR BALL BEARING 6306, CRANKSHAFT PER CUSCINETTO 6306, ALBERO MOTORE	1
36	940 755	SK-SCHRAUBE M16X1,5X150 DIN961 HEX. SCREW M16X1,5X150 VIS 6 PANS M16X1,5X150.....	1
37	840 681	ZYL.SCHRAUBE M8X40 DIN 912 ALLEN SCREW M8X40 / VIS BTR M8X40..... FUER ABZIEHER FOR PULLER POUR EXTRACTEUR	4